



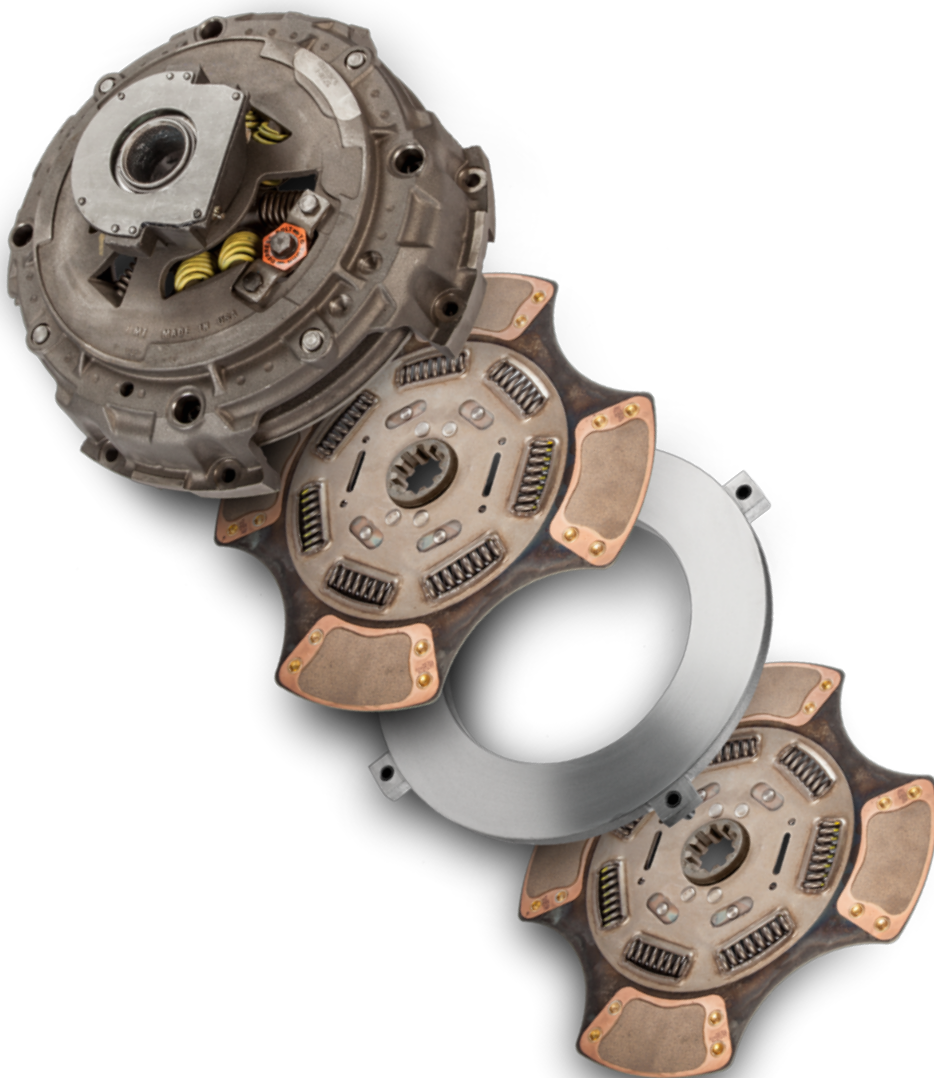
Parts for Trucks, Trailers & Buses

9

# DRIVE TRAIN

*Proven, reliable and  
always innovative.*

TRP provides aftermarket parts for all makes of commercial equipment — including trucks, trailers, buses, engines and winches — that surpass expectations for quality, dependability and value. Regardless of the age, make or application of your equipment, you can rely on TRP for a full line of replacement parts.



**CLUTCH ASSEMBLIES • CLUTCH PARTS •  
DRIVESHAFT • DRIVE AXLE**



Tested. Reliable. Proven.

## TRP Parts Catalog

Choosing the right replacement part or service for your vehicle—whether you own one, or a fleet—is one of the most important decisions you can make for your business. With tested TRP parts, it's an easy decision.

TRP offers you a single aftermarket source for all your parts needs. TRP parts are manufactured and tested to exceed your expectations with a level of quality, value and reliability that is second to none.

### TRP Catalog Disclaimers

*Information and images have been provided by our network of suppliers and may not be reproduced in any manner without written permission. For further information on a product please contact customer service. TRP disclaims all responsibility for any loss, injury, liability or damage of any kind resulting from, arising out of or in any way related to errors or omissions from this publication, including but not limited to typographical errors.*

*The cross-reference information in this catalog is based upon data provided by several industry sources and our partners. While every attempt is made to ensure the information presented is accurate, we bear no liability due to incorrect or incomplete information.*

### Product Availability

*Due to export restrictions and market demands, not all products are always available in every location. Check for availability in your area with your local TRP distributor.*

*No part of this marketing material may be reproduced in any manner without written permission from TRP North America.*

# TABLE OF CONTENTS

## DRIVETRAIN

### HEAVY DUTY CLUTCH ASSEMBLIES

|                                      |     |
|--------------------------------------|-----|
| 14" x 2" .....                       | 9-5 |
| 15-1/2" x 2" .....                   | 9-5 |
| 15-1/2" x 2" with Pedal Assist ..... | 9-5 |

### MEDIUM DUTY CLUTCH ASSEMBLIES

|   |     |
|---|-----|
| 14" x 1-1/2" & 1-3/4" Single and Two Plate. . . | 9-6 |
|---|-----|

## CROSS REFERENCE

|  |     |
|--|-----|
| <u>Cross Reference for Clutch Assemblies</u> ..... | 9-7 |
| Alliance .....                                     | 9-7 |
| Eaton .....  | 9-7 |
| Haldex .....                                       | 9-7 |

## CLUTCH PARTS

|                            |     |
|----------------------------|-----|
| <u>Clutch Brakes</u> ..... | 9-9 |
|----------------------------|-----|

### TRP® North America

750 Houser Way N.  
Renton, WA 98057

[www.TRPParts.com](http://www.TRPParts.com)

|   |      |
|---|------|
| <u>Two-Piece Clutch Brake</u> . . . . . | 9-9  |
| Torque Limiting Clutch Brake . . . . .  | 9-9  |
| Hinged Clutch Brake . . . . .           | 9-9  |
| <u>Pilot Bearings</u> . . . . .         | 9-9  |
| <u>Forks &amp; Shafts</u> . . . . .     | 9-10 |

## DRIVESHAFT

|   |      |
|---|------|
| <u>Full &amp; Half Round U-joint Kits</u> . . . . . | 9-11 |
| Full Rounds . . . . .                               | 9-11 |
| Half Rounds . . . . .                               | 9-11 |
| <u>SPL Series U-Joint Kits</u> . . . . .            | 9-12 |
| <u>SPL Series Bearing Straps</u> . . . . .          | 9-12 |
| <u>Center Bearings</u> . . . . .                    | 9-12 |
| <u>Steering Shafts U-Joint Kits</u> . . . . .       | 9-12 |

## CROSS REFERENCE

|   |      |
|---|------|
| <u>Cross Reference for U-Joints</u> . . . . . | 9-13 |
|---|------|

## DRIVE AXLE

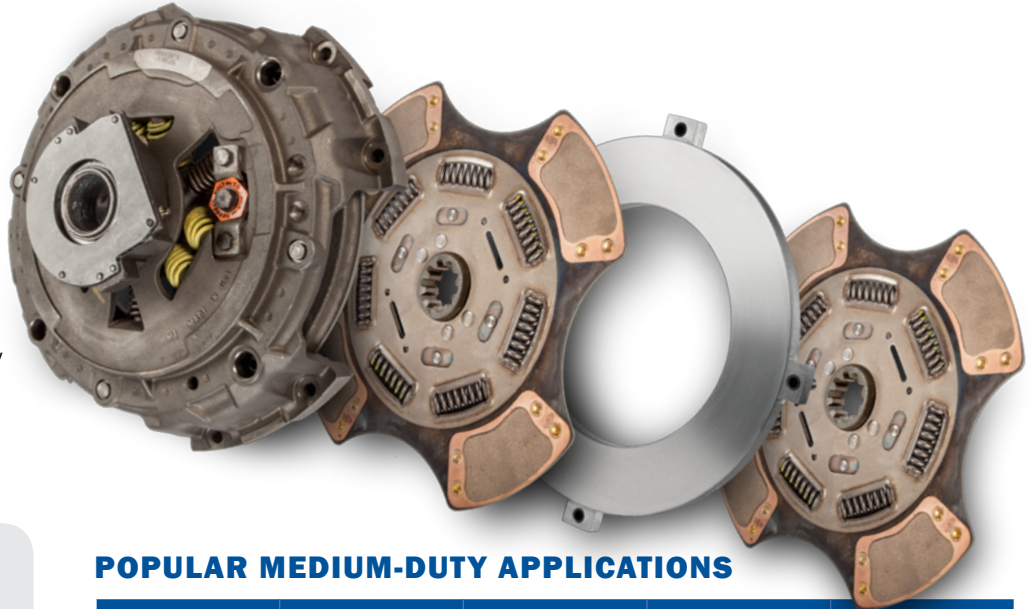
|                                    |      |
|------------------------------------|------|
| <u>Axle Pinion Seals</u> . . . . . | 9-14 |
|------------------------------------|------|



# CLUTCH ASSEMBLIES

## CLUTCH ASSEMBLIES

The TRP line of clutches offers the widest product breadth of any clutch program in North America. TRP offers Medium and Heavy Duty clutches with Pedal Assist. Three assist springs serve to lower bearing load, and lower pedal effort. Also available are 9-Spring style clutches for popular Volvo and Mack applications. For medium duty and heavy duty applications, TRP will have a clutch that will meet your requirements and exceed your expectations.



### FEATURES & BENEFITS

- » All new components and castings for extended life
- » TRP clutches with Pedal Assist reduce foot pedal effort by 30%, resulting in less driver fatigue
- » The TRP program includes Mack application clutches for ease of ordering all clutches under one program
- » TRP clutch warranty is 24 months with unlimited mileage on all Medium Duty and Heavy Duty clutches.

### RELATED PARTS

- » Clutch Installation Kits
- » Transmissions
- » Pilot Bearings
- » Driveline Components

### POPULAR MEDIUM-DUTY APPLICATIONS

| Torque Rating | Size | Disc Style     | Springs | TRP         |
|---------------|------|----------------|---------|-------------|
| 620           | 14"  | 3 Super Button | 8       | CL107783-5  |
| 860           | 14"  | 3 Super Button | 8       | CL107442-12 |

### POPULAR HEAVY-DUTY APPLICATIONS

| Torque Rating | Size  | Disc Style | Springs | TRP          |
|---------------|-------|------------|---------|--------------|
| 1,400         | 14"   | 4 Paddle   | 8       | CL108150-59* |
| 1,650         | 15.5" | 4 Paddle   | 10      | CL108291-74  |
| 1,700         | 15.5" | 4 Paddle   | 7       | CL108825-82  |
| 1,860         | 15.5" | 6 Paddle   | 7       | CL108825-20  |
| 2,050         | 15.5" | 6 Paddle   | 7       | CL108825-25  |

\*Clutch considered Heavy Duty when used with a pot style flywheel.

### POPULAR MACK APPLICATIONS

| Torque Rating | Size  | Disc Style | Springs | TRP          |
|---------------|-------|------------|---------|--------------|
| 1760          | 15.5" | 4 Paddle   | 9       | CL108825 -61 |
| 1760          | 15.5" | 6 Paddle   | 9       | CL108825 -92 |

# HEAVY DUTY CLUTCH ASSEMBLIES

TRP Heavy Duty clutches follow the latest production design. Heavy Duty clutches with Pedal Assist are also available. These clutches lower bearing load, and therefore lower pedal effort. Adjustment is achieved through the reliable lock strap adjuster system on the standard clutches and through a Quick Adjuster on the clutches with Pedal Assist.

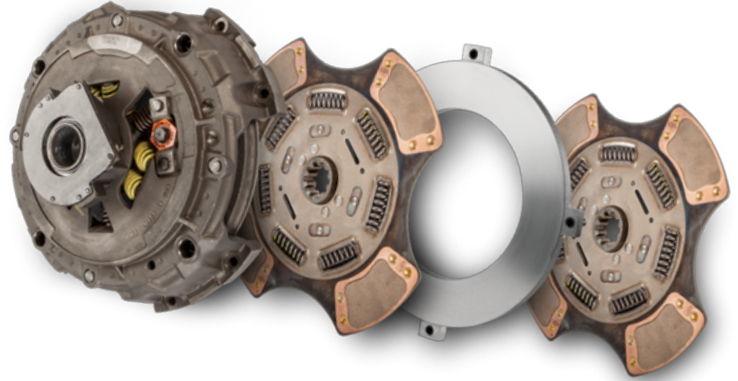


Table 9-1: Heavy Duty Clutch Assemblies.

| Part No.                                | Mfg. Part No.              | Adjustment Type | Bearing Type             | Plate Load (lbs.) | Torque Rating (ft/lb) | Carrier Style | Friction Material | Springs | Free Travel | Flywheel Opening |
|---|----------------------------|-----------------|--------------------------|-------------------|-----------------------|---------------|-------------------|---------|-------------|------------------|
| <b>14" x 2"</b>                         |                            |                 |                          |                   |                       |               |                   |         |             |                  |
| CL108150-59*                            | 108050-59AM,<br>108050-59B | Quick Adjuster  | Greaseable/<br>Dual Zerk | 3200              | 1400                  | 4-Paddle      | Ceramic           | 8       | •           | 7"               |
| <b>15-1/2" x 2"</b>                     |                            |                 |                          |                   |                       |               |                   |         |             |                  |
| CL107247-1                              | 107091-81B                 | Lock-Strap      | Greaseable               | 3600              | 1400                  | 4-Paddle      | Ceramic           | 8       | •           | 7"               |
| CL107247-2                              | 107091-74B                 | Lock-Strap      | Greaseable               | 3600              | 1650                  | 4-Paddle      | Ceramic           | 10      | •           | 8.5"             |
| CL107247-3                              | 108925-20AM                | Lock-Strap      | Greaseable               | 4000              | 1850                  | 4-Paddle      | Ceramic           | 7       | •           | 10"              |
| <b>15-1/2" x 2" WITH PEDAL ASSIST</b>   |                            |                 |                          |                   |                       |               |                   |         |             |                  |
| CL108291-74                             | 108391-74AM                | Quick Adjuster  | Greaseable               | 3600              | 1650                  | 4-Paddle      | Ceramic           | 10      | •           | 8.5"             |
| CL108291-81                             | 108391-81AM                | Quick Adjuster  | Greaseable               | 3600              | 1400                  | 4-Paddle      | Ceramic           | 7       | •           | 10"              |
| CL108825-82                             | 108925-82AM,<br>208925-82  | Quick Adjuster  | Greaseable               | 3600              | 1700                  | 4-Paddle      | Ceramic           | 7       | •           | 10"              |
| CL108825-61 (Mack & Volvo Applications) | 108935-61AM,<br>208925-61  | Quick Adjuster  | Greaseable               | 3600              | 1760                  | 6-Paddle      | Ceramic           | 9       | •           | 10"              |
| CL108825-92 (Mack & Volvo Applications) | 208925-92                  | Quick Adjuster  | Greaseable               | 3600              | 1760                  | 6-Paddle      | Ceramic           | 9       | •           | 10"              |
| CL108825-20                             | 108925-20AM,<br>208925-20  | Quick Adjuster  | Greaseable               | 4000              | 1860                  | 6-Paddle      | Ceramic           | 7       | •           | 10"              |
| CL108825-25                             | 108925-25AM,<br>208925-25  | Quick Adjuster  | Greaseable               | 4000              | 2050                  | 6-Paddle      | Ceramic           | 7       | •           | 10"              |

\*Clutch considered Heavy Duty when used with a pot style flywheel.

## MEDIUM DUTY CLUTCH ASSEMBLIES

Medium Duty ceramic friction material is used for the heaviest applications. All raw materials and components are of O.E.M. quality. Heavy duty damper springs assure longer damper life.

- Specifically engineered for Class 6 & 7 applications.
- Available with 1-1/4", 1-3/8", 1-1/2", 1-3/4", and 2" – 10 spline sizes
- Features a strong, well-ventilated stamped steel cover.
- Ideal for trucks and buses used for local deliveries, pickups and short hauls



Table 9-2: Medium Duty Clutch Assemblies.

| Part No.    | Mfg. Part No. | Adjustment Type | Plate Load (lbs.) | Torque Rating (ft/lb) | Carrier Style  | Friction Material | Ceramic Configuration | Springs | Spline Size |
|-------------|---------------|-----------------|-------------------|-----------------------|----------------|-------------------|-----------------------|---------|-------------|
| CL107783-5  | 107683-5      | External        | 3000              | 620                   | 3 Super Button | Ceramic           |                       | 8       | 3/4"        |
| CL107337-10 | 107237-10     | External        | 2000              | 860                   | 3 Super Trap   | Ceramic           | Two Plate             | 7+1     | 1-3/4"      |
| CL107442-12 | 107342-12     | External        | 2400              | 860                   | 3 Super Button | Ceramic           | Two Plate             | 7+1     | 2"          |

### 14" x 1-1/2" & 1-3/4" SINGLE AND TWO PLATE

## CROSS REFERENCE

### CROSS REFERENCE FOR CLUTCH ASSEMBLIES

#### ALLIANCE

Table 9-3: Cross Reference for Alliance Clutch Assemblies

| OEM Part No.      | TRP Part No. |
|-------------------|--------------|
| ABP/R25-R151406RM | CL107247-1   |
| ABP/R25-R151406RM | CL108291-74  |
| ABP/R25-R153705RM | CL108825-20  |
| ABP/R25-R153755RM | CL108825-25  |

#### EATON

Table 9-4: Cross Reference for Eaton Clutch Assemblies

| OEM Part No.            | TRP Part No. |
|-------------------------|--------------|
| 109701-81B              | CL107247-1   |
| 109701-74B              | CL107247-2   |
| 108925-20AM             | CL107247-3   |
| 107237-10               | CL107337-10  |
| 107342-12               | CL107442-12  |
| 107683-5                | CL107783-5   |
| 108050-59AM, 108050-59B | CL108150-59  |
| 108391-74AM             | CL108291-74  |
| 108391-81AM             | CL108291-81  |
| 108925-20AM, 208925-20  | CL108825-20  |
| 108925-82AM, 208925-82  | CL108825-82  |
| 108935-61AM, 208925-61  | CL108825 -61 |
| 208925-92               | CL108825 -92 |

#### HALDEX

Table 9-5: Cross Reference for Haldex Clutch Assemblies

| OEM Part No. | TRP Part No. |
|--------------|--------------|
| N10839174    | CL107247-2   |
| N10839181    | CL108291-81  |



## CLUTCH PARTS

### CLUTCH REPLACEMENT COMPONENTS

The TRP clutch program offers a wide breadth of clutch replacement components that include clutch brakes, pilot bearings, clutch release yokes and clutch installation kits.

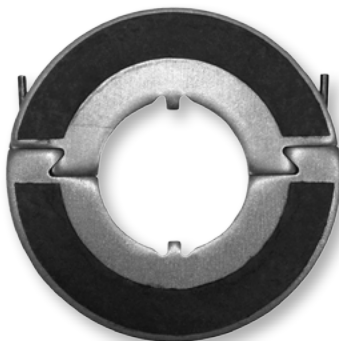


### CLUTCH BRAKES

The purpose of the clutch brake is to slow down or stop the transmission input shaft from rotating when the clutch pedal is depressed. Now you can replace worn or damaged clutch brakes without removing the transmission.

#### CLUTCH BRAKES

| TRP        | Application      |
|------------|------------------|
| CB313SP    | 2" (.380" thick) |
| CB313465SP | 2" (.450" thick) |
| CB313500SP | 2" (.500" thick) |



### TORQUE LIMITING & TWO PIECE CLUTCH BRAKES

| TRP      | Application                       |
|----------|-----------------------------------|
| CB127200 | 2" Two-Piece                      |
| CB127760 | 2" Torque Limiting (.380" t hick) |



### PILOT BEARINGS

High temperature grease is specially formulated to increase product life, exceeding the engine manufacturer's requirements. High temperature pilot bearings should be used for today's high torque engines that operate at low RPMs and higher operating temperatures.

#### PILOT BEARINGS

| TRP           | Application                      |
|---------------|----------------------------------|
| CPB6306ZZ     | 2.833" x 1.179"                  |
| CPB63062RS2HT | 2.833" x 1.179" High Temperature |



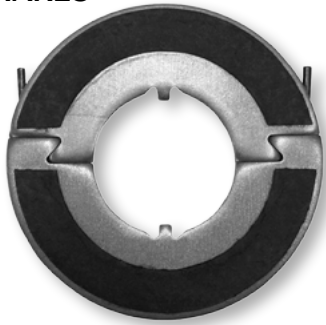
### CLUTCH INSTALLATION KITS

| TRP    | Application |
|--------|-------------|
| CK1771 | RT Series   |
| CK1910 | FR Series   |

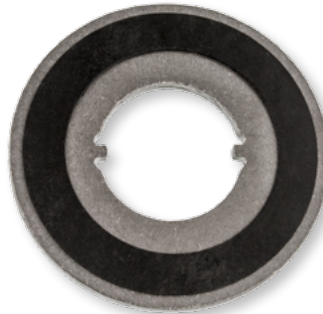


# CLUTCH PARTS

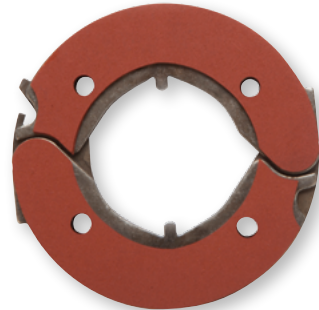
## CLUTCH BRAKES



CP127200



CP127760



CPBK313465SP

Table 9-6: Clutch Brakes

| Part No. | Measurements | Notes |
|----------|--------------|-------|
|----------|--------------|-------|

### TWO-PIECE CLUTCH BRAKE

|          |            |           |
|----------|------------|-----------|
| CB127200 | 2" (5.1cm) | Two-Piece |
|----------|------------|-----------|

### TORQUE LIMITING CLUTCH BRAKE

|          |   |  |
|----------|---|--|
| CB127760 | 2" (5.1cm), Torque Limiting, 3/8" (.95cm) Thick |  |
|----------|---|--|

### HINGED CLUTCH BRAKE

|            |                            |  |
|------------|----------------------------|--|
| CB313500SP | 2" (5.1cm) Hinged, Locking |  |
|------------|----------------------------|--|

|         |                            |  |
|---------|----------------------------|--|
| CB313SP | 2" (5.1cm) Hinged, Locking |  |
|---------|----------------------------|--|

## PILOT BEARINGS



### HIGH TEMPERATURE

High temperature grease is specially formulated to increase product life, exceeding the engine manufacturer's requirements.

- High temperature pilot bearings should be used for today's high torque engines that operate at low RPMs and higher operating temperatures.

Table 9-7: Pilot Bearings

| Part No.      | Measurements                       | Notes     |
|---------------|------------------------------------|-----------|
| CPB63062RS2HT | 2-13/16" x 1-3/16" (7.1cm x 3.0cm) | High Temp |
| CPB6306ZZ     | 2-13/16" x 1-3/16" (7.1cm x 3.0cm) |           |

## FORKS & SHAFTS

Essential replacement wear components to avoid misalignment.



CF105C137



CS106C1498

Table 9-8: Clutch Forks &amp; Shafts

| Part No.   | Description   |
|------------|---|
| CF105C137  | Clutch Release Fork 14" (35.6cm) & 15-1/2" (39.4cm) |
| CS106C1498 | Cross Shaft   |

## CLUTCH INSTALL KITS

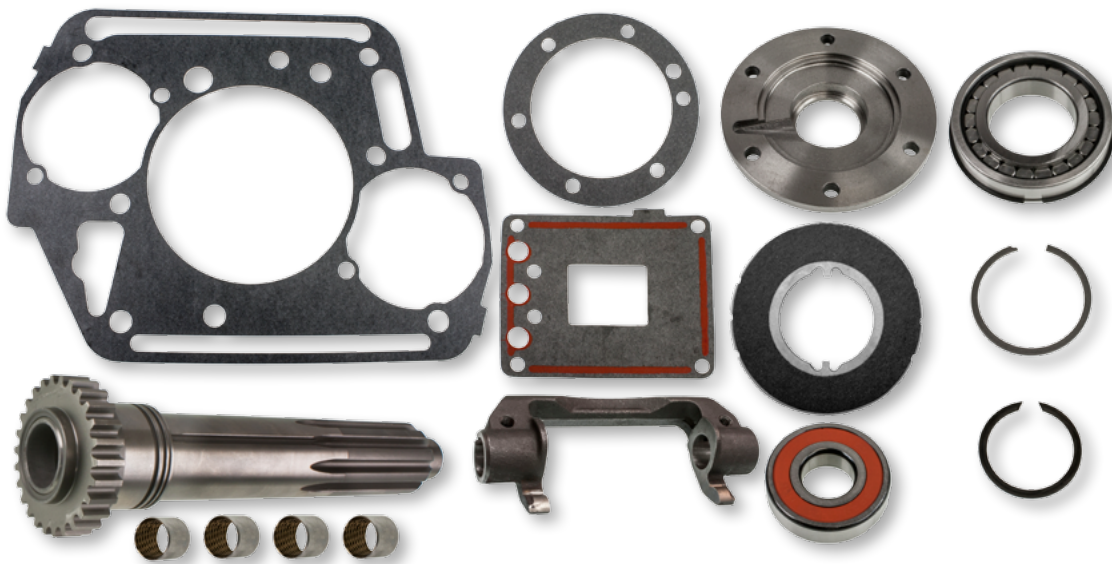


Table 9-9: Clutch Install Kits

| Part No. | Application                            |
|----------|--|
| CK1771   | Clutch Installation Kit, RTLO Series   |
| CK1910   | Clutch Installation Kit, FRO 10 Series |

# DRIVESHAFT

## FULL & HALF ROUND U-JOINT KITS

- U-Joints are case hardened for long life and durability.
- All products manufactured and tested to OEM specifications for quality control.
- Center bearings contain heavy duty roller bearing for long life.
- Nationwide, 12-month warranty.



Table 9-10: U-Joint Kits - Full & Half Rounds

| Part No.           | Series | Type                    |
|--------------------|--------|-------------------------|
| <b>FULL ROUNDS</b> |        |                         |
| DS279              | 1610   | 5-70-28X hardware kit   |
| DS280              | 1710   | 6.5-70-18X hardware kit |
| DS407              | 1760   | 6.5-70-18X hardware kit |
| DS281              | 1810   | 6.5-70-18X hardware kit |
| <b>HALF ROUNDS</b> |        |                         |
| DS674              | 1610   |                         |
| DS675              | 1710   |                         |
| DS676              | 1810   |                         |
| DS677              | 1760   |                         |

## SPL SERIES U-JOINT KITS

- U-Joints are case hardened for long life and durability.
- All products manufactured and tested to OEM specifications for quality control.
- Center bearings contain heavy duty roller bearing for long life.
- Nationwide 12 month warranty.

Table 9-11: U-Joint Kits - Spicer SPL Series

| Part No. | Series  | U-Joint                |
|----------|---------|------------------------|
| DS170X   | SPL 170 | Permanently Lubricated |
| DS250X   | SPL 250 | Permanently Lubricated |

## SPL SERIES BEARING STRAPS

Table 9-12: Bearing Straps - SPL Series

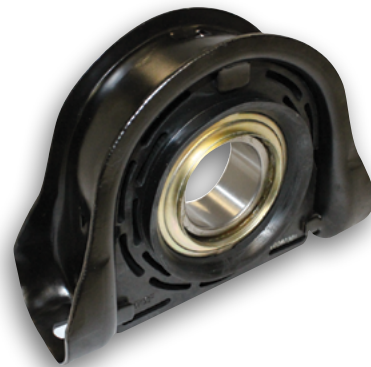
| Part No.   | Series           |
|------------|------------------|
| DS657018X  | 1710, 1760, 1810 |
| DS1707018X | SPL170           |
| DS2507018X | SPL250           |



## CENTER BEARINGS

Table 9-13: Center Bearings

| Part No.     | Series     |
|--------------|------------|
| DS2108751X   | 1760, 1810 |
| DS2106611X   | n/a        |
| DS2106611XSA | n/a        |



## STEERING SHAFTS U-JOINT KITS

Table 9-14: U-Joint Kits - Steering Shafts

| Part No. |                         |
|----------|-------------------------|
| SS103    | Ujoint - Steering Shaft |
| SS170    | Ujoint - Steering Shaft |

# CROSS REFERENCE

## CROSS REFERENCE FOR U-JOINTS

Table 9-15: U-Joint Cross Reference

| Part No.     | Dana Part No. |
|--------------|---------------|
| DS657018X    | 6.5-70-18X    |
| DS1707018X   | 170-70-18X    |
| DS2507018X   | 250-70-18X    |
| 90-28X       | 90-70-28X     |
| DS2108751X   | 210875-1X     |
| DS2106611X   | 210661-1X     |
| DS2106611XSA | 5003523       |
| DS279        | 5-279X        |
| DS280        | 5-280X        |
| DS407        | 5-407X        |
| DS281        | 5-6281X       |
| DS674        | 5-674X        |
| DS675        | 5-675X        |
| DS676        | 5-676X        |
| DS677        | 5-677X        |
| DS170X       | SPL170-3X     |
| DS250X       | SPL250-3X     |
| SS103        | 5-103X        |
| SS170        | 5-170X        |

# DRIVE AXLE

## AXLE PINION SEALS



Table 9-16: Drive Axle - Axle Pinion Seals

| Part No. | Description                               |
|----------|---|
| AS2728   | Forward Rear Input, 14X, 16X, 18X         |
| AS2729   | Forward Rear Output, 14X, 16X             |
| AS2730   | Rear Rear Input, 14X                      |
| AS2731   | Rear Rear Input, 16X, 18X                 |
| AS7000   | Forward Input, 344, 404, 405, 454, DSP40  |
| AS7001   | Forward Output, 344, 404, 405, 454, DSP40 |
| AS7002   | Forward Input, 341, 381, 402, 451         |
| AS7003   | Forward Output, 341, 381, 402, 45         |
| AS7004   | Forward Input, 46K to 65K, 461            |
| AS7005   | Forward Output, 46K to 65K, 461           |
| AS7006   | Output Shaft 461                          |





*For information, updates, or corrections,  
please contact us at [support@trparts.com](mailto:support@trparts.com)*

*No part of this marketing material may be  
reproduced in any manner without written  
permission from TRP® North America.*

**TRP® North America**

750 Houser Way N.  
Renton, WA 98057

[www.TRPParts.com](http://www.TRPParts.com)